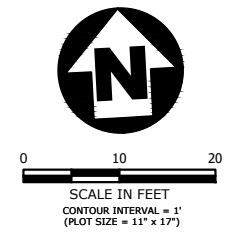
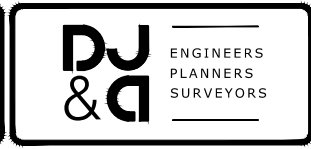


- NOTES:**
1. ALL DIMENSIONS ARE TO TOP BACK OF CURB, UNLESS OTHERWISE NOTED.
 2. THIS LINE **— — — — —** DEFINES THE SCOPE OF WORK LIMITS IN THE BASE BUILD ALTERNATE A BID SCHEDULE CONTRACT FOR ALL PERMANENT ROADWORK. EARTHWORK DAYLIGHTS AND UTILITY WORK MAY EXTEND BEYOND THESE LIMITS.
 3. ALL ELEVATION CALLOUTS **XXXX.XX** ARE TO TOP BACK OF CURB (TBC), UNLESS OTHERWISE NOTED, FG=FINISHED GROUND
 4. ALL 5' BY 5' PEDESTRIAN LANDINGS AT TOPS OF RAMPS ARE NOT TO EXCEED 1.5% IN ANY DIRECTION.



REVISION	DATE	DESCRIPTION

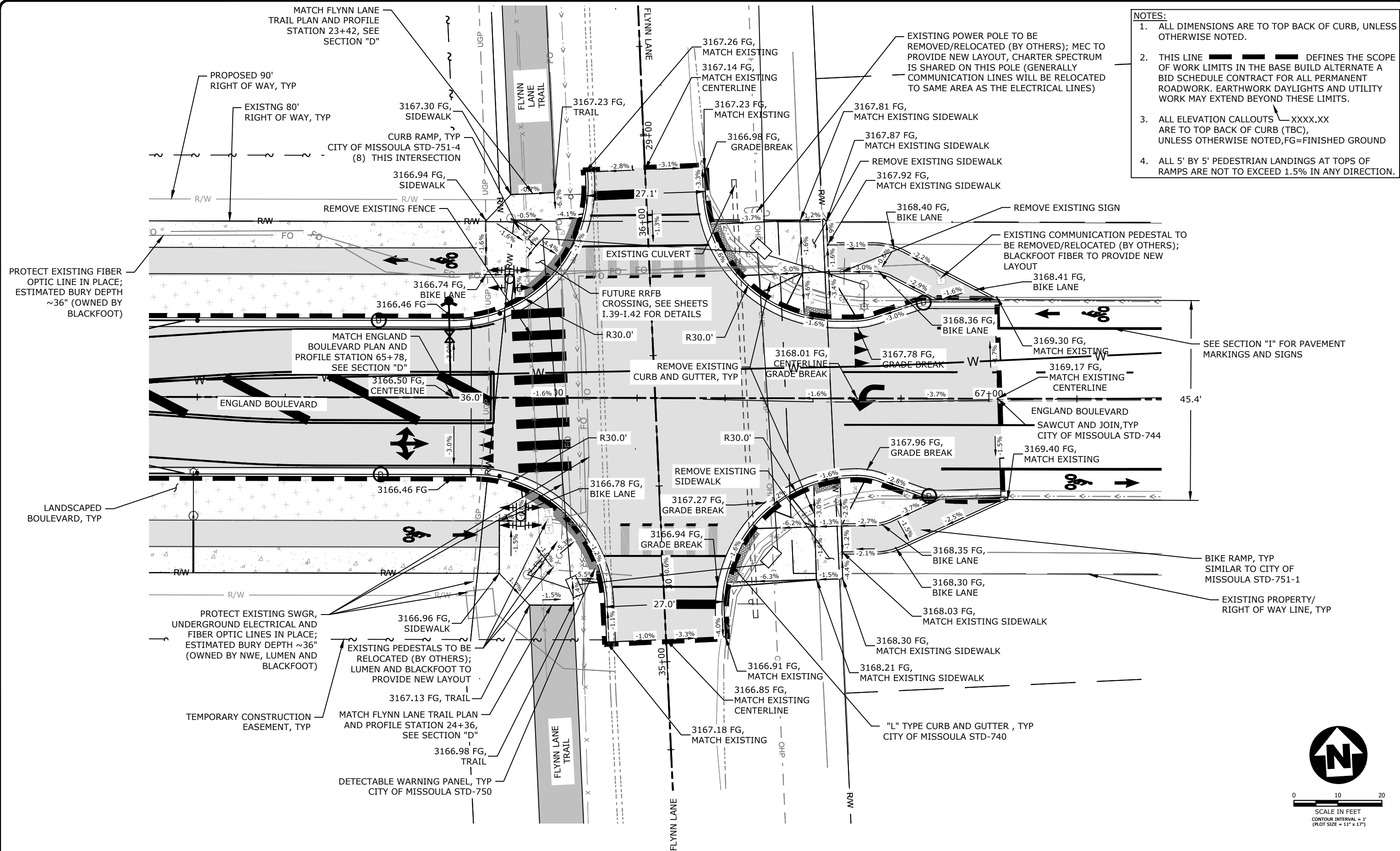
DESIGNER JN PROJ. NO. 7065
 DRAWN JN DATE 04/16/2021
 CHECKED DP SURVEYED DJ&A, P.C.



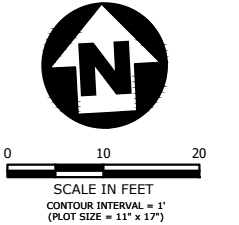
MULLAN BUILD
 100% - BID PLANS

ENGLAND BOULEVARD &
 DOUGHERTY DRIVE
 INTERSECTION PLAN

SHEET
 OF
 C.48 C.49

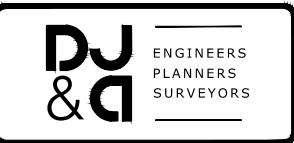


- NOTES:**
1. ALL DIMENSIONS ARE TO TOP BACK OF CURB, UNLESS OTHERWISE NOTED.
 2. THIS LINE DEFINES THE SCOPE OF WORK LIMITS IN THE BASE BUILD ALTERNATE A BID SCHEDULE CONTRACT FOR ALL PERMANENT ROADWORK. EARTHWORK DAYLIGHTS AND UTILITY WORK MAY EXTEND BEYOND THESE LIMITS.
 3. ALL ELEVATION CALLOUTS ARE TO TOP BACK OF CURB (TBC), UNLESS OTHERWISE NOTED, FG=FINISHED GROUND
 4. ALL 5' BY 5' PEDESTRIAN LANDINGS AT TOPS OF RAMPS ARE NOT TO EXCEED 1.5% IN ANY DIRECTION.



REVISION	DATE	DESCRIPTION

DESIGNER	JN	PROJ. NO.	7065
DRAWN	JN	DATE	04/16/2021
CHECKED	DP	SURVEYED	DJ&A, P.C.



**MULLAN BUILD
100% - BID PLANS**

**ENGLAND BOULEVARD &
FLYNN LANE
INTERSECTION PLAN**

SHEET
OF
C.49 C.49