

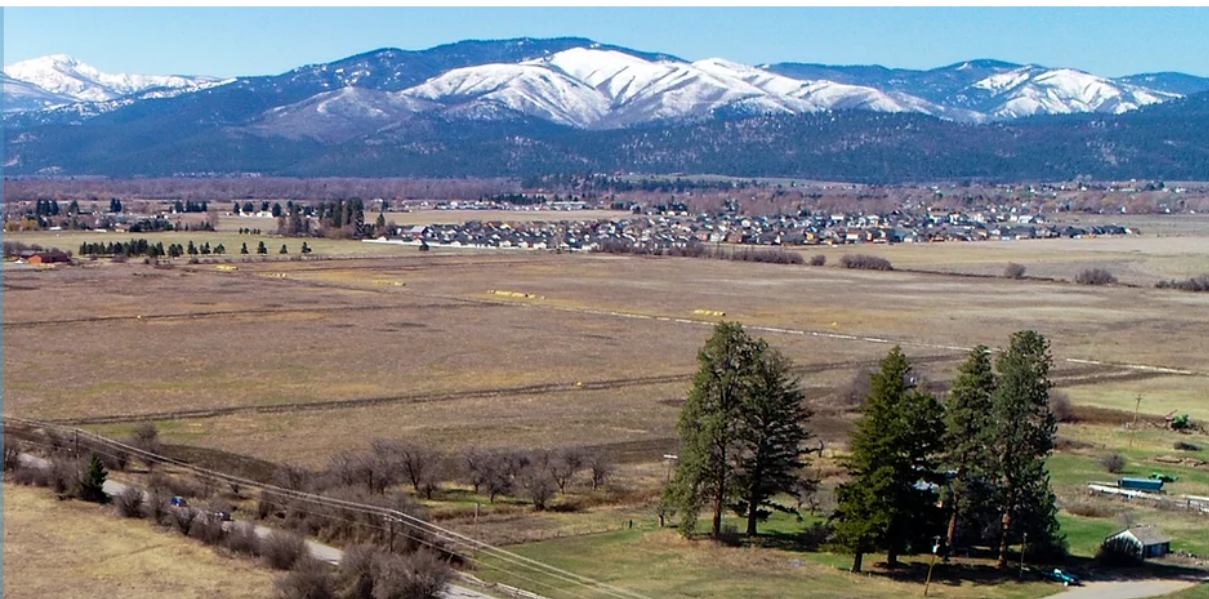


MULLAN

— BUILD —

Mullan BUILD

Public Meeting #4
Design Aesthetics
December 4, 2020

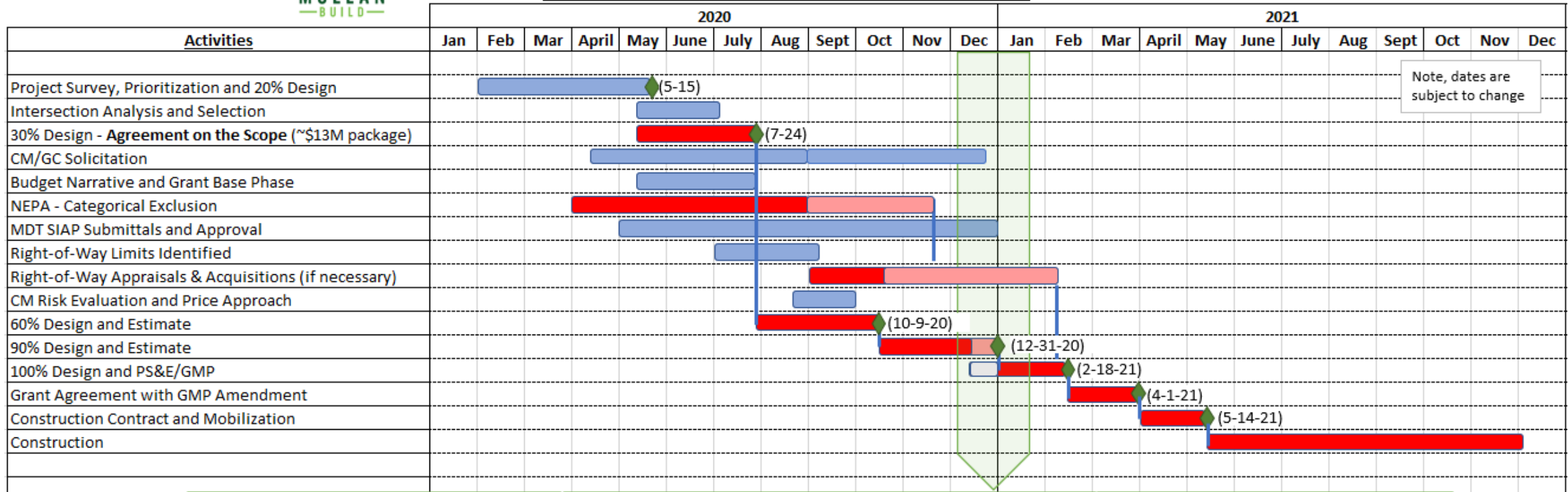


Welcome & Introductions

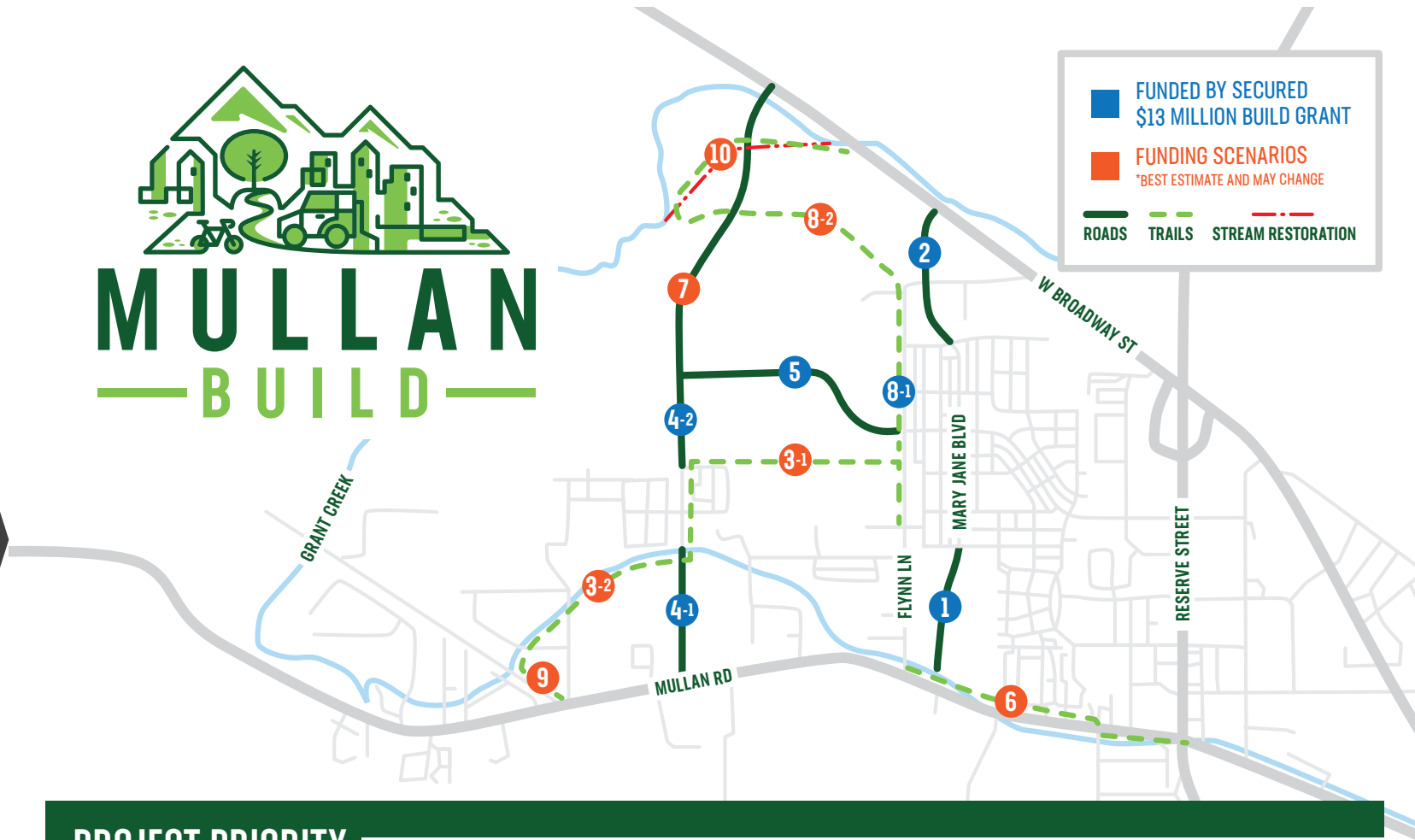
BUILD Schedule



Mullan BUILD Milestone Schedule - updated 12.3.20



BUILD Scope



PROJECT PRIORITY

- | | | | |
|-----------------------------|----------------------------|------------------------------|---|
| 1 MARY JANE BOULEVARD SOUTH | 4 GEORGE ELMER DRIVE SOUTH | 7 GEORGE ELMER DRIVE NORTH | 9 MILWAUKEE TRAIL |
| 2 MARY JANE BOULEVARD NORTH | 5 ENGLAND BOULEVARD | 8-1 FLYNN LANE TRAIL - EAST* | 10 GRANT CREEK TRAIL AND STREAM RESTORATION |
| 3 TIPPERARY WAY TRAIL | 6 MULLAN TRAIL | 8-2 FLYNN LANE TRAIL - WEST* | |

* The Flynn Lane Trail was originally prioritized lower than the Tipperary Way Trail. However, because the Tipperary Way Trail does not have land available to build this connection, and the Flynn Lane Trail does, this trail segment moved up in ranking to be constructed in 2021. Tipperary Way Trail still remains a top priority and will be built as soon as possible.

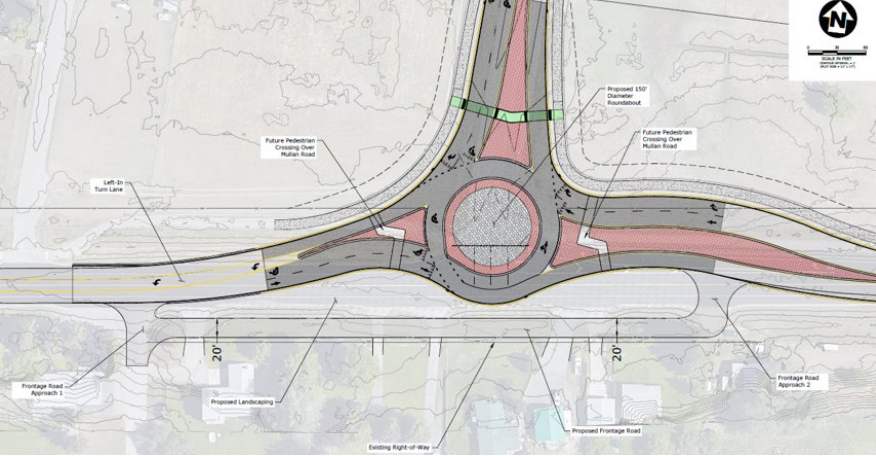


Design Aesthetics

- Our public rights-of-way serve many functions and need to be aesthetically pleasing.
- Safety and accessibility are critical factors.
- Public funded project.
- Balance between up-front costs, function, ease of maintenance, and maintenance costs over time.
- Various agency jurisdictions [City, County, MDT].

Areas of Discussion Today

- Roundabout landscaping
- Boulevard landscaping
- Lighting
- Aesthetic improvements will occur as neighborhoods develop



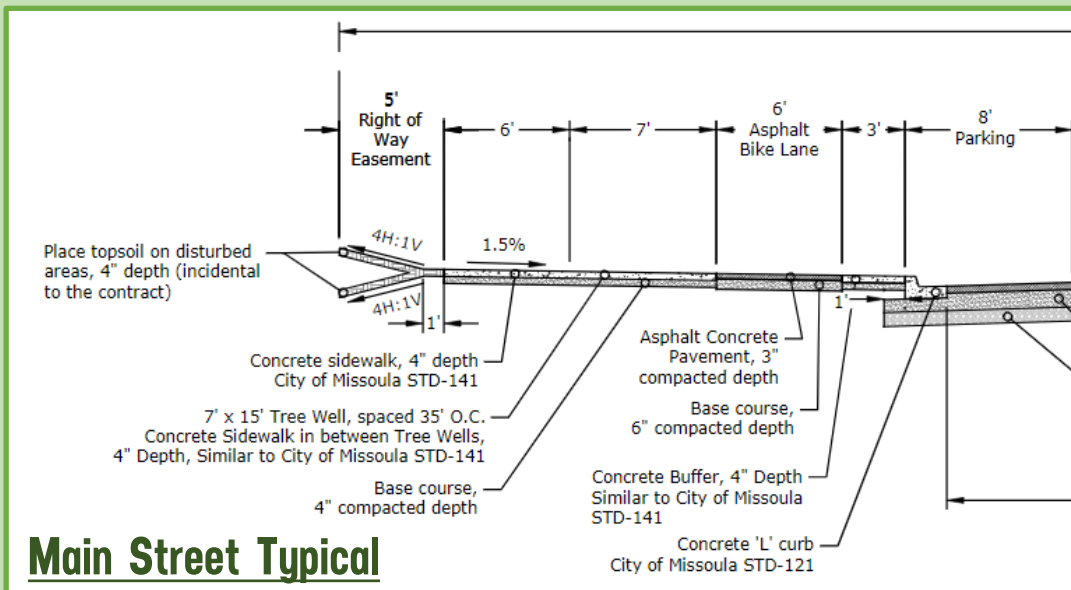
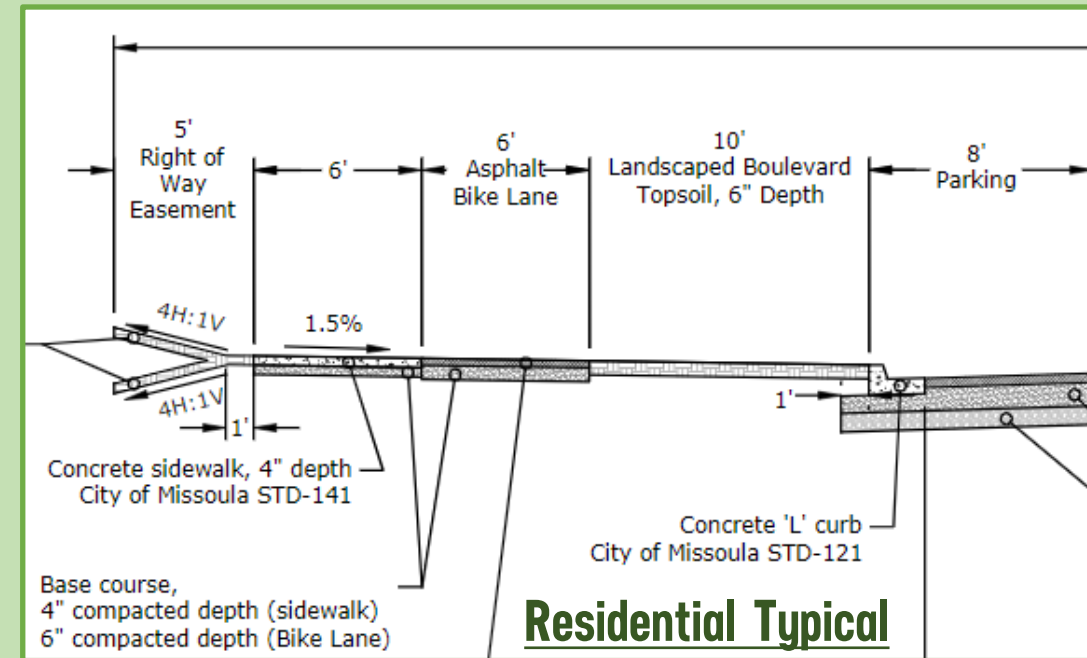
Roundabout Landscaping

- Roundabouts on Mullan
- Hardscape vs vegetated landscaping
- Maintenance
- Traffic safety limitations
- Scale and maintenance of landscaping determined when roundabout designs are further along



Boulevard Landscaping

- Boulevard landscaping will be detailed and designed by the BUILD project but installed with development of adjacent parcels.



Lighting



Mary Avenue



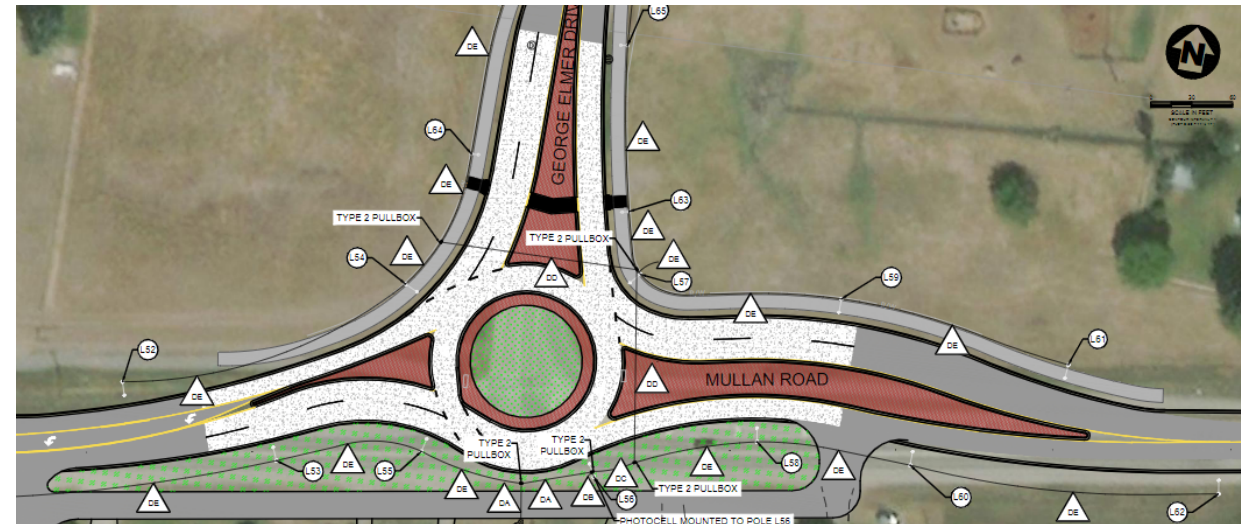
Standard Black



Russell

- Installed at intersections
- Accepted city lighting options
- Slightly different poles, mast arms, and fixtures
- Costs range is ~\$8,000 to \$12,000 per light installed

GE/Mullan intersection would have 14 lights





Thoughts?

- **We are eager to hear your feedback!**
- **Email katie@bigskypublicrelations.com with additional questions.**



Future Meetings

- Dec. 18: Construction Details
- Jan. 8: Environmental Considerations