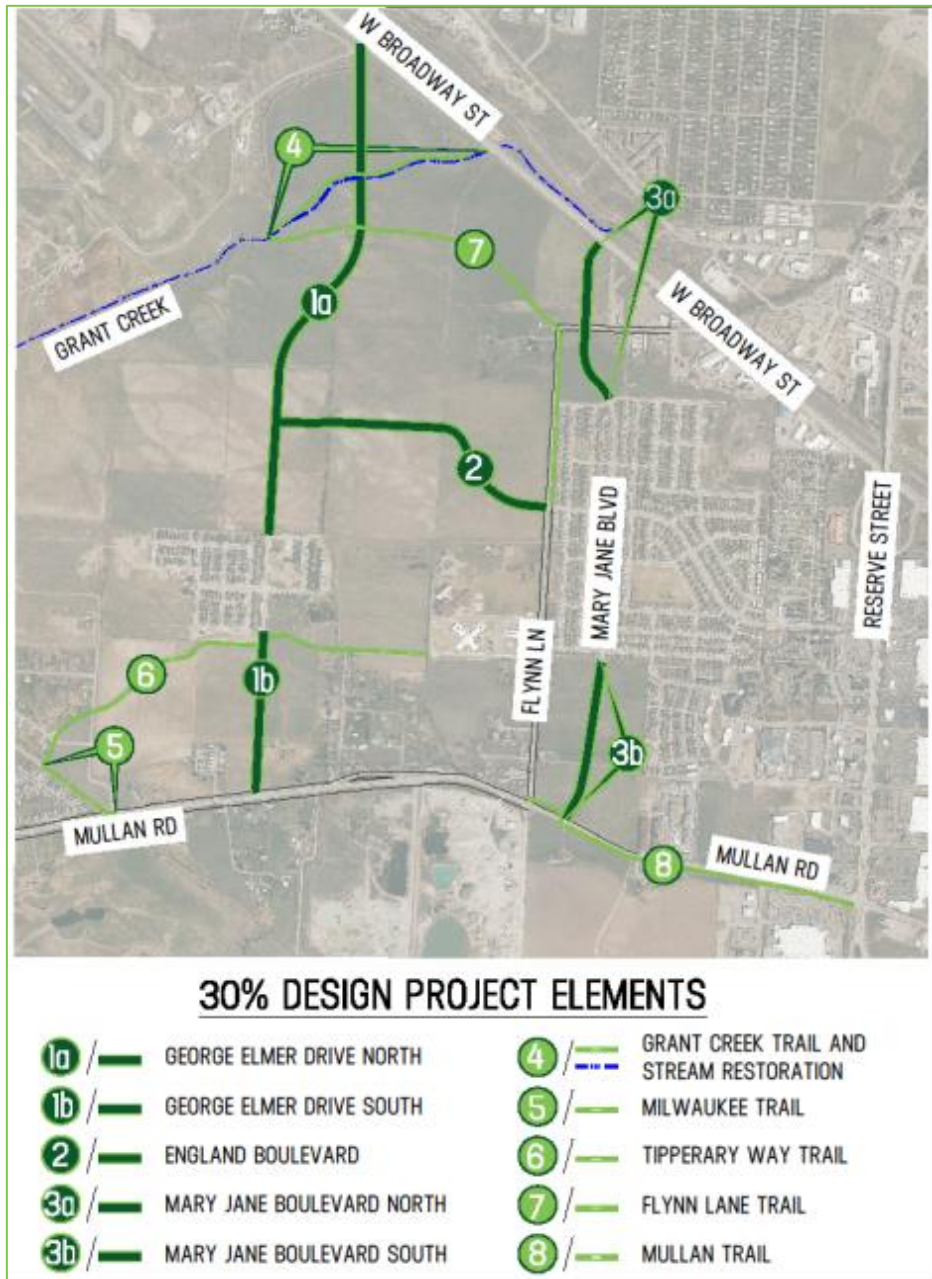




## Mullan BUILD Grant Prioritization Committee

The Prioritization Committee was developed to use criteria to prioritize and rank the different project elements in the Mullan BUILD Grant Project. The original ask for funding through BUILD was \$23.2 M, and the city and county received \$13 M. The original grant application had eight (8) project elements, and those elements have been further broken down into ten (10) separate project elements. Those elements can be viewed using the graphic below.





The committee will be comprised of team members representing a diverse group of interests. Both the County Commissioners, and the City Council will each have a member who will represent voters across the county. The entire team is listed in the table below.

#### **PRIORITIZATION COMMITTEE**

- Josh Slotnick – Missoula County Commissioner
- Mirtha Becerra – Missoula City Council
- Jordan Hess – Missoula City Council
- Ryan Frey – Missoula Building Industry Association (MBIA)
- Jim Bachand – Missoula Organization of Realtors (MOR)
- Kim Latrielle – Missoula Chamber of Commerce
- Jeremy Keene – Missoula City Public Works Director
- Shane Stack – Missoula County Public Works Director

The team will use the following criteria list to score the ten (10) different project elements.

#### **SCORING CRITERIA**

- Independent Utility
- Right-of-Way Availability
- Safety
- Traffic Congestion
- Access to Land for Economic Development
- Transportation Choice
- Environmental Review

Ultimately, the project elements that are built with this round of BUILD funds will be selected primarily based on the prioritized list. However, other factors such as funding availability will also help determine which projects are constructed as part of the 2019 BUILD funds. Those projects that are not constructed with the 2019 BUILD funds, may be constructed through later rounds of BUILD funding, or the use of local dollars and impact fees. The city and county are committed to completing the construction of the remaining elements, as they will become the backbone of the development in the Mullan Area.