



MULLAN — BUILD —

Mullan BUILD

Steering Committee Meeting #1

June 9, 2020

A black and white photograph of a rural road intersection. In the foreground, there is a grassy field. A road leads from the bottom center towards the horizon. On the right side of the road, there is a house and a car. In the background, there are rolling hills and mountains under a cloudy sky. A large green arrow points from the bottom left towards the text.

Welcome & Introductions

Meet the Steering Committee

- Why are you excited to serve on the steering committee?
- What is your agency or department's interest in the Mullan BUILD project?

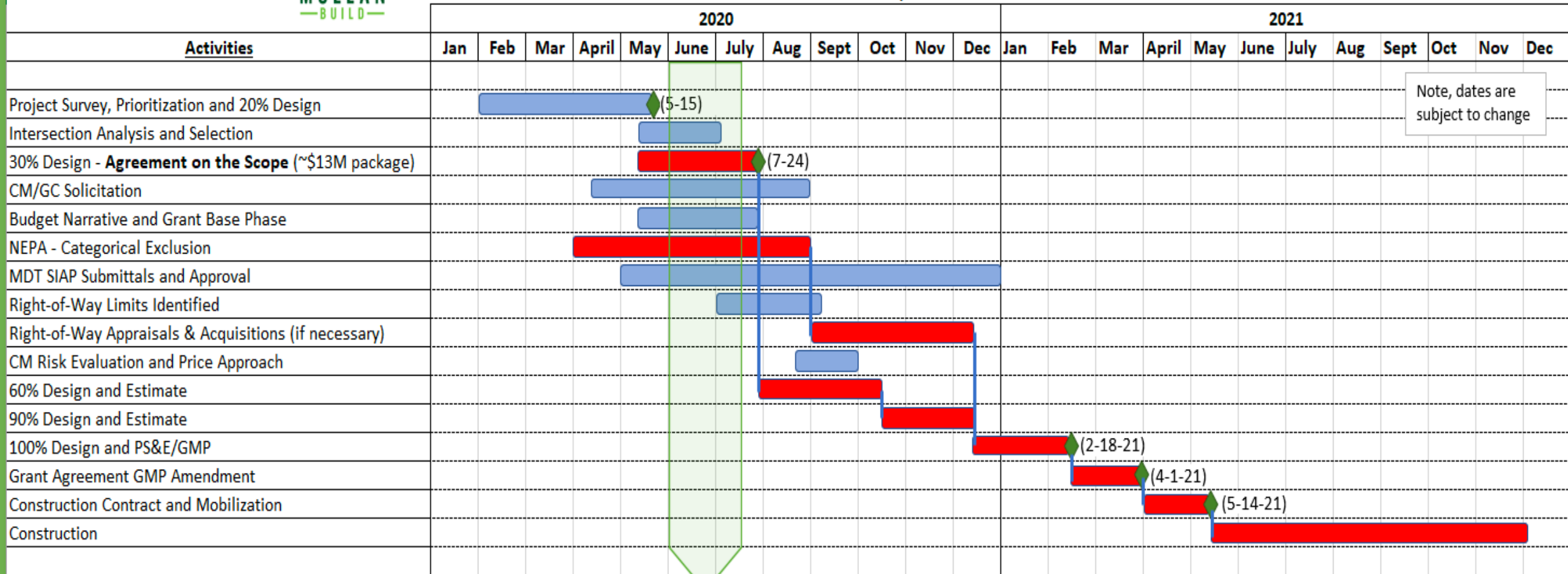
Steering Committee Roles & Responsibilities

- In-reach to your colleagues and communities
- Share relevant and timely information
- Provide data and background information
- Review technical work
- Advise at critical junctures

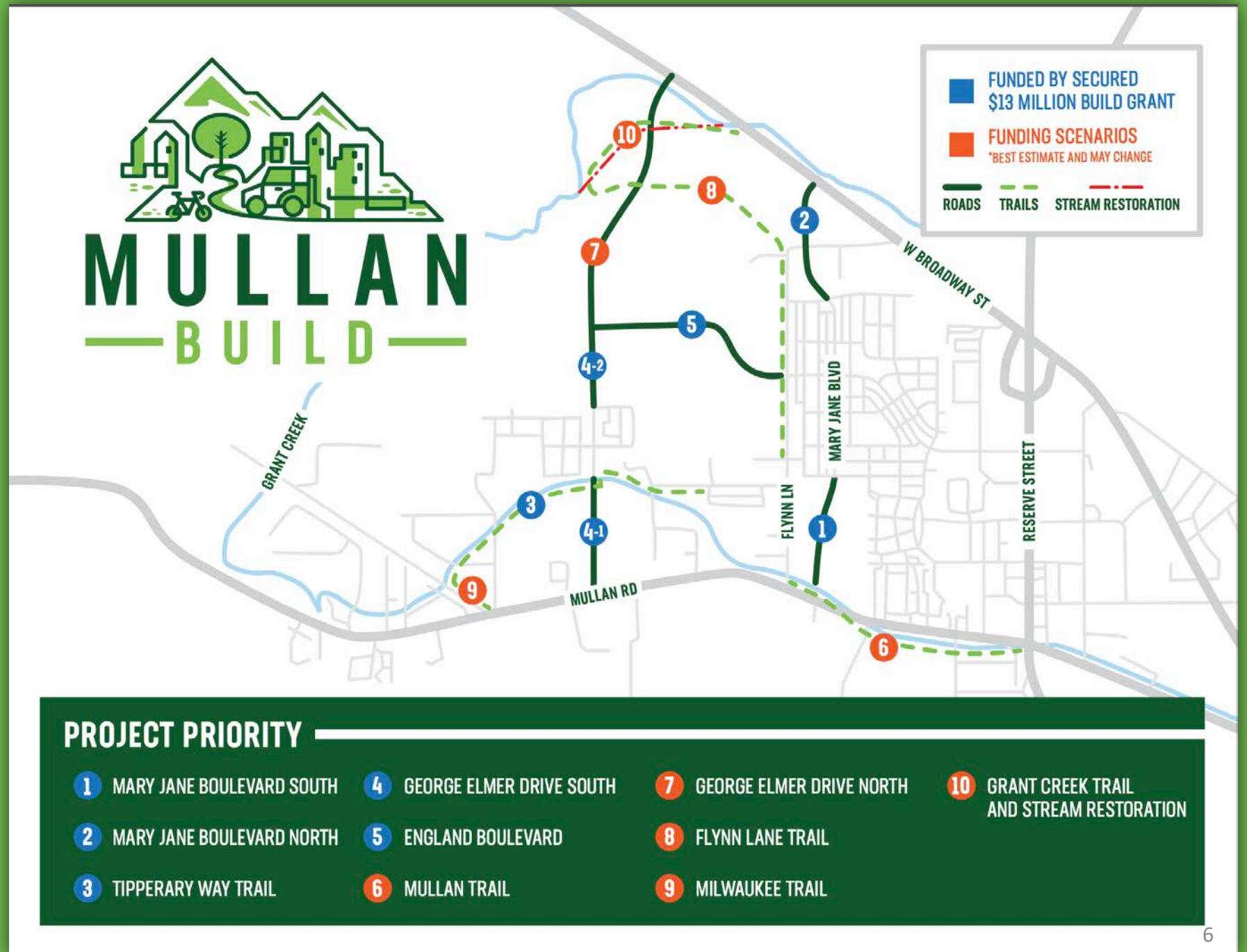
Work Plan & Schedule



Mullan BUILD Milestone Schedule - updated 6.3.20



Prioritization Framework



Prioritization Framework

- Safety
- Traffic congestion relief
- Access to land for economic development
- Options for all modes of travel
- Potential environmental and permitting challenges

Current Project Ranking

- Mary Jane Boulevard South
- Mary Jane Boulevard North
- Tipperary Way Trail
- George Elmer South
- England Boulevard

20% Design

- 20% design package allowed us to accelerate the project and support the prioritization process
- Project costs
 - 20% Design Estimate Overview
- What the 20% design does not have

Schedule & Critical Design Elements

- Impacts to right-of-way are critical to identify early
- Thorough traffic analysis to be completed
 - Design
 - Impacts/Challenges
- Traffic analysis informs intersection and lane configurations
 - Key design features that impact right-of-way



Thoughts?

- We are eager to hear your feedback!

The background image is a blurred photograph of a suburban neighborhood. In the foreground, a large, rustic wooden wheel, possibly from a piece of farm equipment, is partially visible. The wheel has a thick wooden rim and several spokes. Behind the wheel, a row of houses with various rooflines and colors (brown, grey, white) is visible. The houses are slightly out of focus. The overall scene is a peaceful, rural or suburban setting.

Next Meeting

July X at 9:30 a.m.