



# MULLAN — BUILD —

Mullan BUILD

Public Meeting #1

October 16, 2020



# Welcome & Introductions

# BUILD Grant Application Process

- In July of 2019, Missoula County and the City of Missoula partnered to apply for a Better Utilizing Investments to Leverage Development (BUILD) Grant.
- This 127-page document outlined uses of project funds, selection criteria, project readiness, benefit cost analysis and more.
- As a result, \$13 million was rewarded to the project.
- The grant request noted \$23 million in needs. With a \$10 million discrepancy, local government agencies faced prioritizing project elements for 2021 construction.

## EXECUTIVE SUMMARY

### What will the project do?

The Mullan BUILD project will complete over 3 miles of roads, 3.7 miles of new trails, and 0.5 miles of stream restoration and flood control.

The completed project:

1. Creates jobs, increases housing supply, and provides places for new and expanding businesses in one of Montana's fastest growing communities
2. Alleviates traffic congestion and reduces travel times
3. Provides safe, convenient walking and biking corridors for school children, and non-motorized and transit users

### Why is this project needed?

Growth is rapidly occurring on the northwest edge of Missoula and the road grid isn't keeping up. The lack of connecting streets funnels traffic through the busiest intersection in Montana, causing lengthy commutes. The transportation infrastructure is

the greatest constraint to continued orderly growth of the area. With these transportation improvements, the Missoula economy will benefit from an additional 1,500 acres of infill development with room for 2,950 new homes and 11 million square feet of commercial and industrial space.



### Why Support this Project?

#### Public Safety

Improves safety of non-motorized users

Reduces injuries, fatalities, and property damage

Improves emergency response times, evacuation routes, and flood risk

#### Economic Development

Creates 349 construction jobs, supports 7,000 permanent future jobs

Potential for \$2.6 billion in new taxable value from commercial, industrial, and residential development, including construction of a new VA hospital and workforce housing adjacent to Missoula's only Opportunity Zone

Increases tax revenues and reduces maintenance costs

#### Reduce Congestion

2.7 million hours saved in reduced delays

137 million fewer vehicle miles

142 million fewer vehicle trips

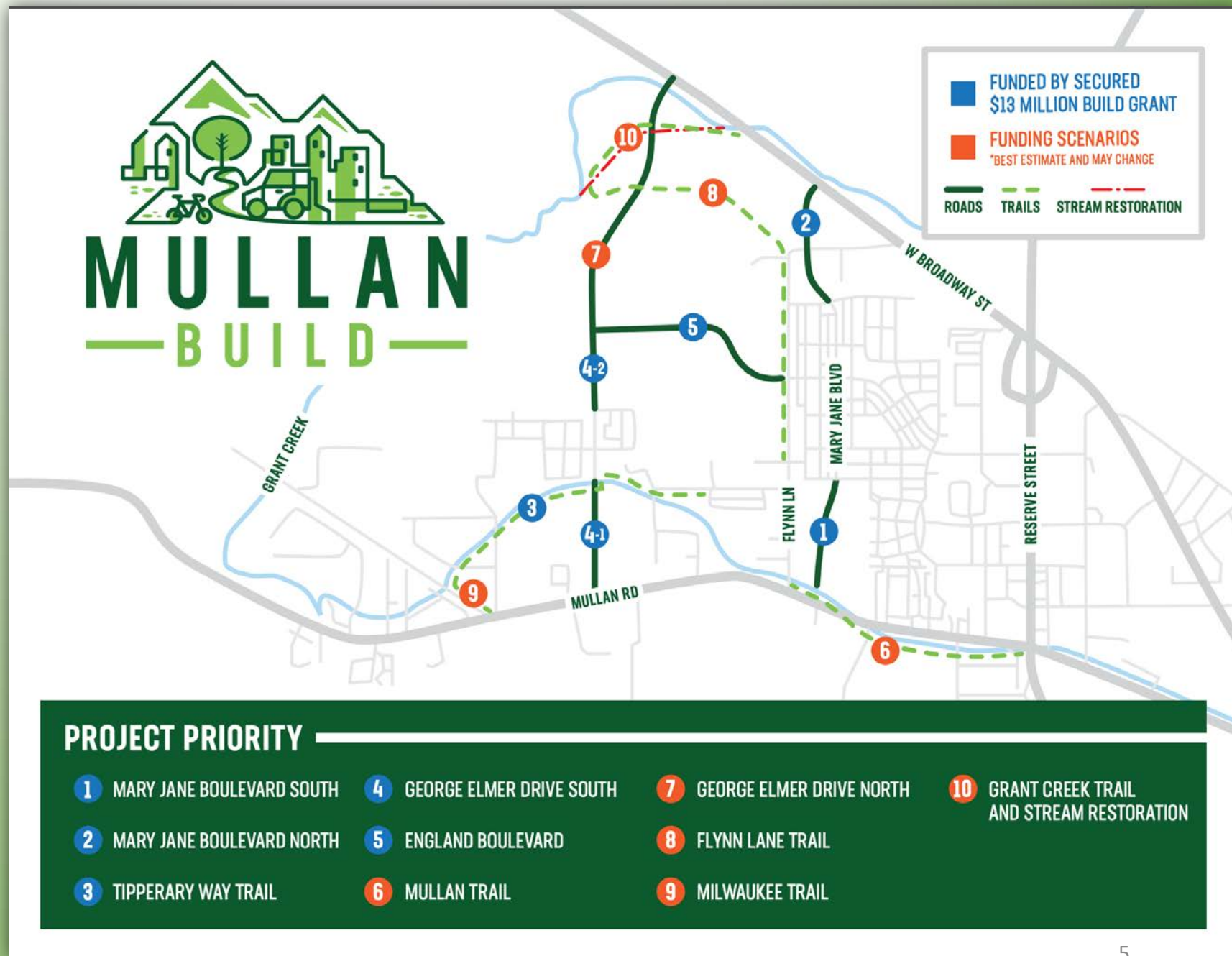
Reduces vehicle emissions by 6.4 million kilograms of carbon monoxide



# Prioritization Framework

- Safety
- Traffic congestion relief
- Access to land for economic development
- Options for all modes of travel
- Potential environmental and permitting challenges

# Prioritization Framework



# Current Project Ranking

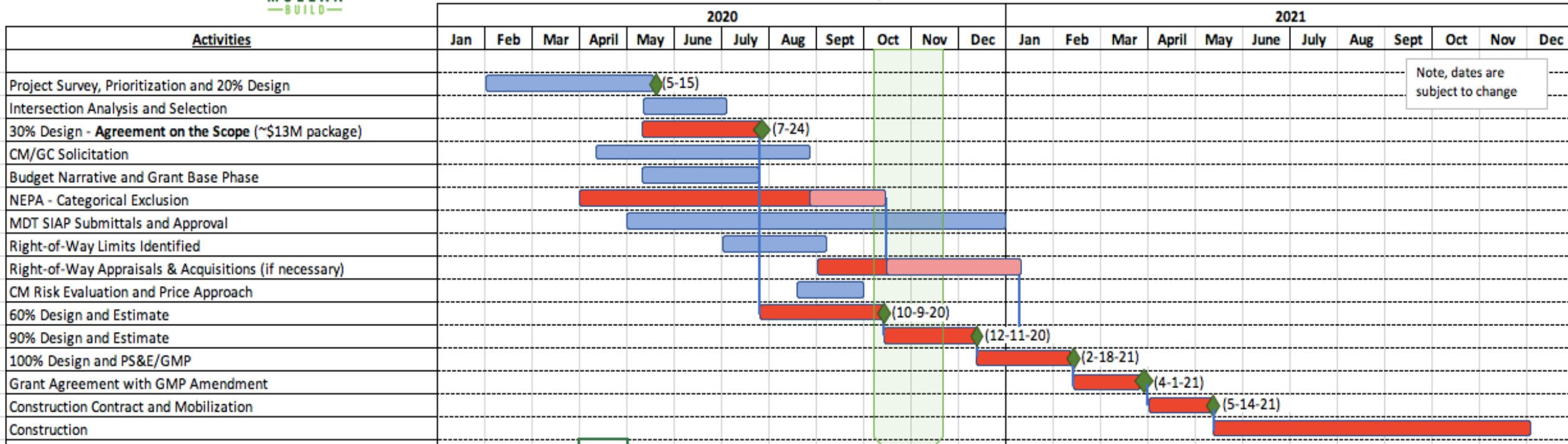
- Mary Jane Boulevard South
- Mary Jane Boulevard North
- Flynn Lane Trail
- George Elmer South
- England Boulevard



# Project Delivery Timeframe



**Mullan BUILD Milestone Schedule - updated 10.7.20**



# Design Milestones

- 30% design package [July] allowed us to accelerate the project and support the prioritization process
  - Project costs
- 60% design [Oct] – detailed design of the prioritized elements



# Schedule & Critical Design Elements

- Thorough traffic analysis with inputs from Master Plan
  - Intersection Designs
  - Traffic Growth 2050
- Identify right-of-way impacts early and already working with landowners already
- Ongoing coordination with developers and private utilities
- CM/GC Contracting Method



# Thoughts?

- We are eager to hear your feedback!





## Future Meetings

- Oct. 30: Mullan Area Master Plan Implementation
- Nov. 13: Intersection Improvements
- Dec. 4: Design Aesthetics
- Dec. 18: Construction details